



**KIM TAYLOR**  
DISCOVERY  
TEACHING  
SCHOOL ALLIANCE  
Teaching School  
Lead

**Welcome** to Discovery TSA and that sense of renewal as we begin our school year with energy and aspiration. Over the next year we aim to bring system leaders together to provide opportunities for them to share best practice. We need to make greater use of the talent in our local area to inspire more teachers to become outstanding and make a difference for our pupils.

KIM TAYLOR

## PARTNERSHIP SCHOOLS



Spring  
Common  
Academy



Samuel  
Pepys  
School



Hinchingbrooke  
School



Ely St  
John's  
School



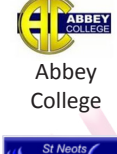
St Peter's  
School



St Ivo  
School



Cromwell  
Academy



Abbey  
College



Swavesey  
Village  
College



St Neots  
Learning  
Partnership

## FEEDBACK

Our first Annual SEN Conference in July 2016 was a great success. Key Note Speakers included **JEAN GROSS CBE** and **MARY RAYNER HMI**. Delegate feedback included: *'current, informative, professional expertise, good to hear from National Leaders, excellent and inspirational'*



**KIM TAYLOR** pictured with **SIMON BAINBRIDGE** of Highfields School

Interested in working with **DISCOVERY TSA** Please contact: **CHRIS CLAYTON** (Teaching School Coordinator)  
[cclayton@springcommon.cambs.sch.uk](mailto:cclayton@springcommon.cambs.sch.uk)

## CPD OFFER

**SEN ANNUAL CONFERENCE 2017**  
**FRIDAY 7TH JULY 2017**  
**WYBOSTON LAKES**

For Guest Speaker details, please check our website:

[www.discoverytsa.co.uk](http://www.discoverytsa.co.uk)

**TEAM TEACH TRAINING**  
**7TH & 8TH NOVEMBER 2016**  
**5TH & 6TH DECEMBER 2016**  
**SPRING COMMON ACADEMY**  
***This course is now fully booked***

Please contact:

[lward@springcommon.cambs.sch.uk](mailto:lward@springcommon.cambs.sch.uk) or  
telephone: 01480 377404  
for additional dates

**SENSE - INTERVENOR COURSE**  
**MONDAY 28TH NOVEMBER**  
**~ FRIDAY 2ND DECEMBER 2016**

**SPRING COMMON ACADEMY**  
A 5 day course from SENSE, for intervenors working with deafblind children.

For more information or to book a place please go to:

[www.sense.org.uk/training](http://www.sense.org.uk/training)

**PLEASE CHECK OUR WEBSITE**  
[www.discoverytsa.co.uk](http://www.discoverytsa.co.uk)  
**FOR DETAILS OF UPCOMING COURSES**

## LEADERSHIP OFFER

**HINCHINGBROOKE SCHOOL**  
Starting January 2017  
NPQML & NPQSL

For further information please contact:

**LORRAINE CUNNINGHAM** email: [lcc@hinchbk.cambs.sch.uk](mailto:lcc@hinchbk.cambs.sch.uk)  
or **CHRIS CLAYTON** email: [cclayton@springcommon.cambs.sch.uk](mailto:cclayton@springcommon.cambs.sch.uk)

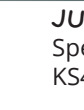
## SPECIALIST LEADERS of EDUCATION



**LEIGH AITKEN**  
Specialism:  
SEN



**KATE MOYES**  
Specialism:  
Geography



**JULIE MCCRORY**  
Specialism: Business  
KS4/5



**ZARA PATRICK**  
Specialism:  
Science and  
Assessment



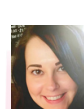
**ANDREW BENNETT**  
Specialism:  
Maths



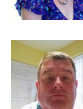
**DAVID BANHAM**  
Specialism:  
Maths



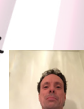
**HANNAH DAWSON**  
Specialism:  
Pupil Achievement in  
English and Maths



**HADEEL BENNETT**  
Specialism:  
English and  
Leadership of CPD



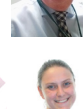
**DR DAVE RIDDICK**  
Specialism:  
School Business  
Management



**HARVEY GOODMAN**  
Specialism:  
Music



**KIM ULMER**  
Specialism:  
SEN



**LAUREN BLYTHE**  
Specialism: Pupil  
Achievement in  
English



**SIOBHAN DOWN**  
Specialism:  
RE, SMSC, and British  
Values

Interested in working with or becoming an **SLE** Please contact:  
**LORRAINE CUNNINGHAM** (SLE Coordinator) ~ [lcc@hinchbk.cambs.sch.uk](mailto:lcc@hinchbk.cambs.sch.uk)  
**CHRIS CLAYTON** (Teaching School Coordinator)  
~ [cclayton@springcommon.cambs.sch.uk](mailto:cclayton@springcommon.cambs.sch.uk)